

Biosecurity in Scotland

Mariella Marzano



The Projects

PHC2019_04: Assessment of large-scale plant biosecurity risks to Scotland from non-specialist and online horticultural sales

PHC2019_05: Assessment of plant biosecurity risks to Scotland from large-scale plantings for landscaping and infra-structure projects

PHC2019_06: Assessment of plant biosecurity risks to Scotland from large-scale tree plantings for environmental benefits

Start date: March 2020

End Date: Sept 2020

The Team

Mariella Marzano, Chris Pollard, Mike Dunn,
Berglind Karlsdottir, Sarah Green, April Armstrong



Rehema White, Althea Davies



Luiza Toma



David Cooke



Beth Purse, Louise Barwell
with support from Dan Chapman, University of Stirling &
Adam Kleczkowski, University of Strathclyde



Glyn Jones



Harry Watkins



Katy Hayden, Leonie Alexander, Aline Finger



The Advisory Panel

- The Scottish Government
- SASA
- APHA
- Woodland Trust
- Forest and Land Scotland
- Scottish Forestry
- HTA
- BALI
- Landscape Institute
- CONFOR
- SNH
- Growforth nursery
- Alba trees
- J Smart & Co Ltd
- RSPB
- Plantlife
- Cairngorms National Park
-

Social Researchers



**Chris
Pollard**



**Mariella
Marzano**



**Mike
Dunn**



**Berglind
Karlsdottir**

Stakeholder mapping



- Review and updating of stakeholder databases
Additions (where missing for Scottish relevance)
- Growers and retailers (who and where)
- Online sales (who and where)
- Construction companies & intermediaries
- Landscape architects, contractor, garden designers
- Conservation, charity, estates, community groups

Non-specialist & online retailers

- What types and numbers of plants are being moved in and out of Scotland?
 - Incl. volume, range, suppliers, customer base, different supply chains
- What are current levels of biosecurity knowledge and how do these influence practices?
 - Incl. procurement policies & processes, costs, reputation of supplier, consumer demand
- What are the perceived (and actual) risks of current practices?
 - e.g. plant selection, suppliers, quarantine, waste disposal, supply chains
- Who are the relevant individuals/organisations /industry and what are their biosecurity responsibilities (where, how & when)?



Methods

- What do we already know? Rapid review and synthesis of existing datasets
- **Survey** of online retailers (relevant to Scotland) or retailers who also sell online.
 - Assess types & volumes of plants, awareness & biosecurity practices, consumer demand for biosecure plants, appetite for accreditation
- **Semi-structured** interviews with large retailers in Scotland e.g. supermarkets, DIY, Lifestyle stores
 - Also include nurseries due to their knowledge and experience of non-traditional retailers of plants



Landscape & infrastructure

- Where are major infrastructure and landscaping projects getting their plants from?
- What are the risks and challenges associated with complex supply chains?
 - e.g. local supply capacity, tracing, packaging, transport, survival/establishment rate, replacement costs
- Who are the key players & what do they know about plant biosecurity risks?
- How to promote better biosecurity?



Methods

- What do we already know? Rapid review and synthesis of existing datasets
- Desk-based **tracing exercise** of c10 existing large-scale projects – plant specifications approved vs what's happened on the ground.
 - Map key decision-makers relevant in procurement and in supply chains
- **Survey** (or interview) on knowledge, risks & actions
- Three **case studies** mapping decision-making processes relating to landscaping component from start to finish
- **Focus groups** to assess value of risk models (incl. trade networks, pest host range, climate suitability etc.) to inform decision-making on biosecurity



Environment

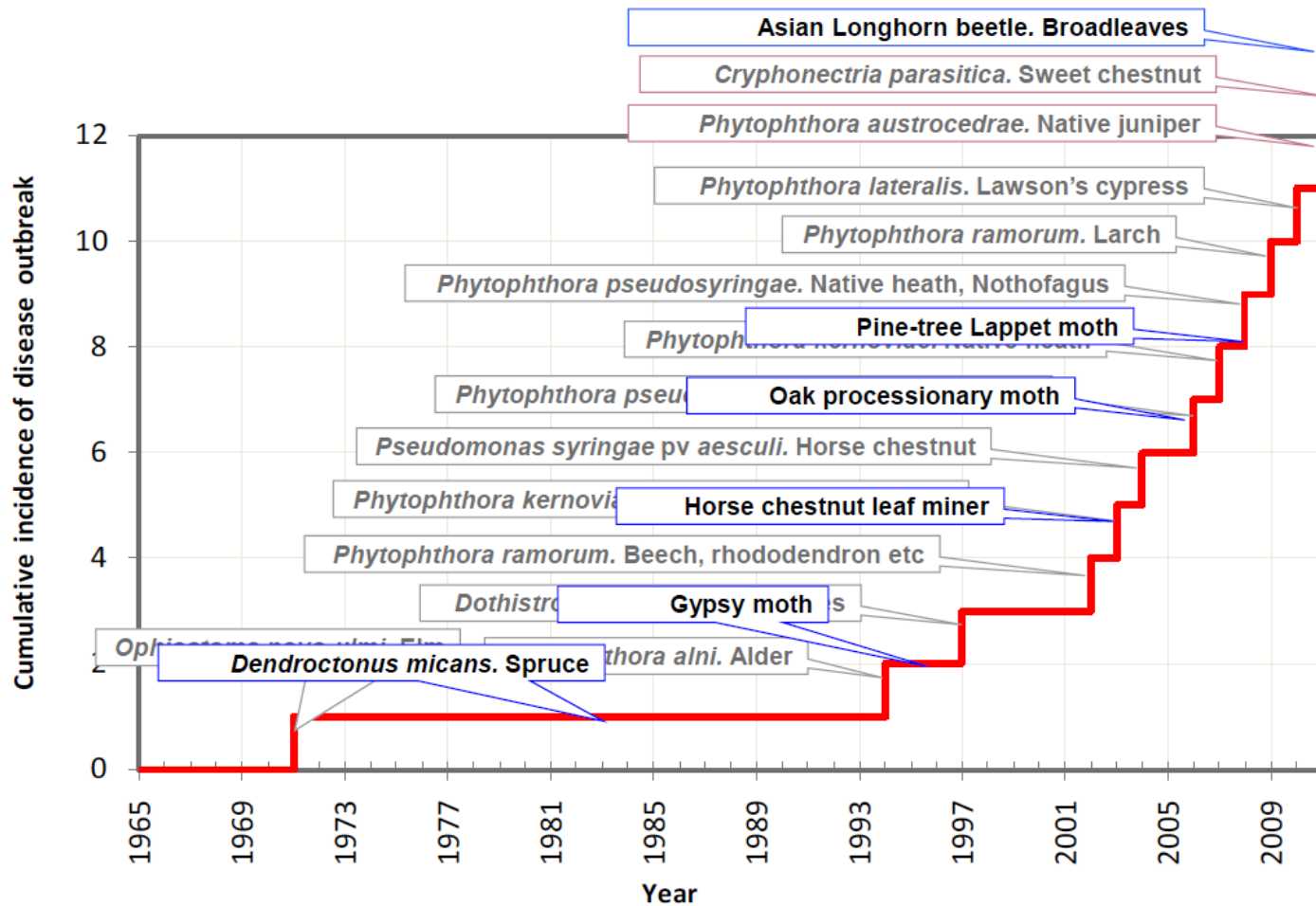
- Who are the major players & decision-makers in:
 - Woodland creation/expansion
 - Habitat restoration/regeneration
- What are the biosecurity risks from planning to planting?
- What are the major drivers & trade-offs informing location, species, procurement, forecasts?
 - E.g. volumes, size of plants, sourcing & availability of biosecure plants, transport, establishment rates, costs, staffing
- What are the opportunities for implementing lessons learned and promoting good biosecurity?



Methods

- What do we already know? Rapid review and synthesis of existing datasets.
- **Case studies** to understand drivers and trade-offs from Past, Current, Future example:
 - Restoration planting of existing vulnerable habitats
 - New planting for habitat/native woodland creation
 - Commercial forestry
- **Focus groups** and **semi-structured interviews** of key players involved in specifying, sourcing and planting
- **Multi-stakeholder workshop** to assess usefulness of geographical risk models to inform planting choices (e.g. integrating trade scenarios with vulnerable habitats and hosts)

Pests and diseases are increasing...



...and already impacting

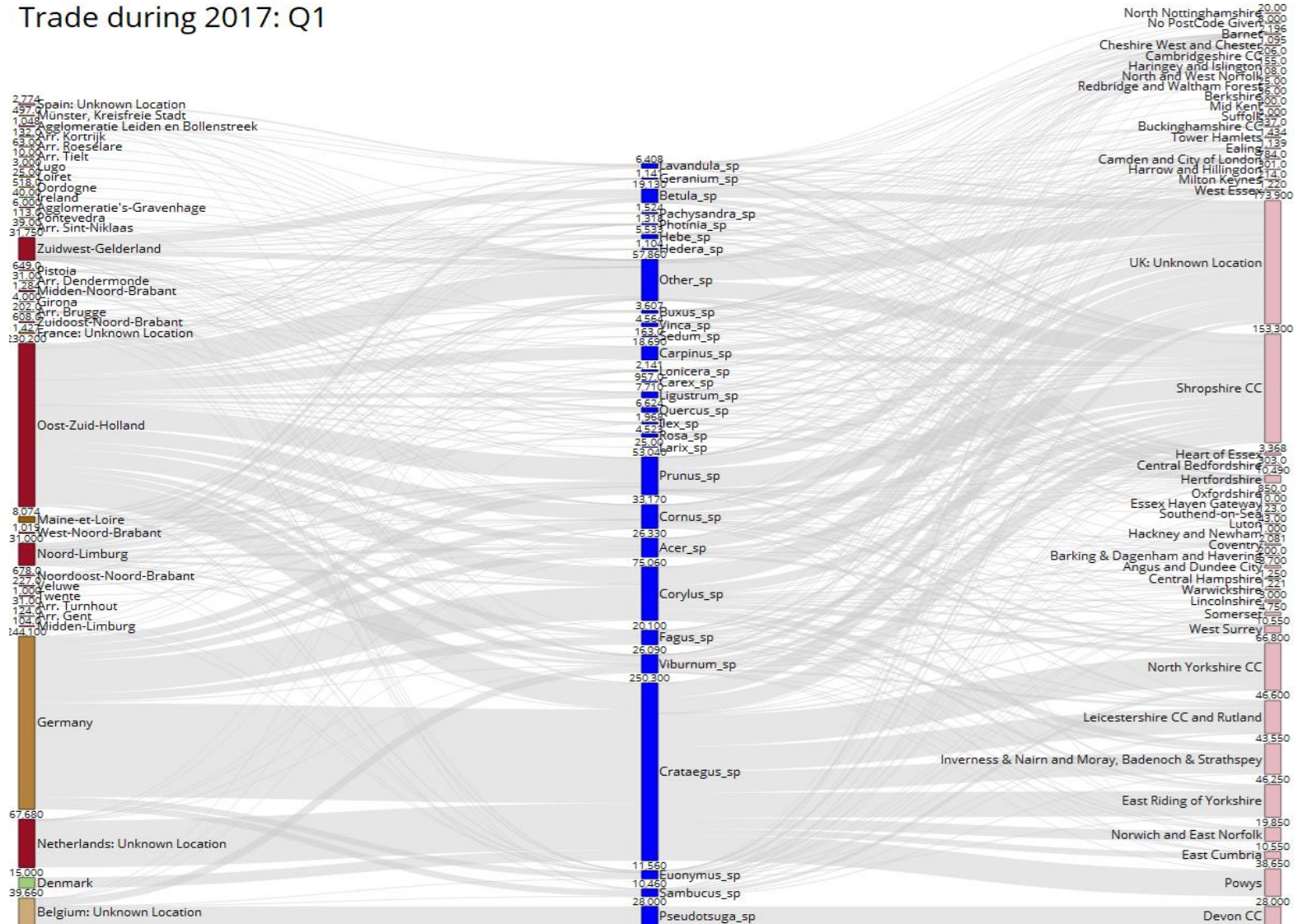


Phytophthora ramorum on larch (Scottish Borders)

Images: Forestry Commission, S. Hendry

A lot of trade!

Trade during 2017: Q1



Can you help?

- Would you like to be part of the project?
- Are you well-connected? E.g. non-specialist retailers Supermarkets, DIY & lifestyle stores, small independent shops
- Do you know of any online retailers we can approach?
- Do you have contacts in the building industry or have experience/contacts from any major infrastructure/housing projects that have a landscaping element?
- What would you like to know?

